



Record Electrical Associates Ltd

DIGITAL GAUGES

Overview

The digital DG25i series offers 0,5 % of span accuracy, while the laser welded stainless steel sensor and socket make this product suitable for use with a wide variety of pressure media in demanding industrial applications.

This series is also available with enhanced accuracy of 0,25 % of span making it suitable for many test and measurement uses.

IP67 ingress protection rating means the DG25i is suitable for hose directed water spray such as equipment wash down. Nine preprogrammed engineering units of measurement to read pressure in units applicable to the process or familiar to the technician using the gauge.

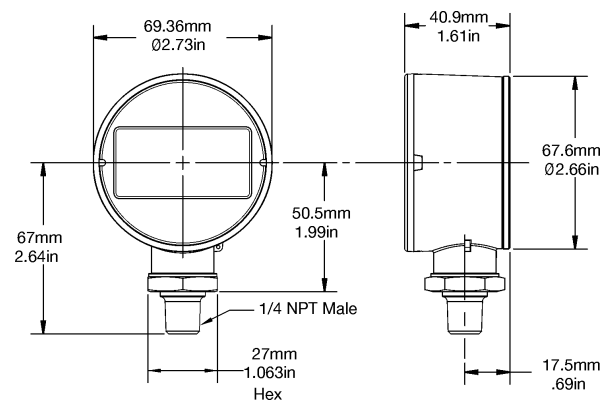
The DG25i comes standard with many features such as: tare, min and max memory, programmable custom engineering units, and pressure ranges from -1 to 1600 bar.



Features

- 0,5 % terminal point accuracy, (0,25 % optional)
- 5 Digit LCD display with new large 12 mm character size
- New Bar Graph Display (20 segment)
- Nine engineering units of measure plus one user programmable unit
- Capable of measuring gauge, vacuum and compound ranges from and -1 bar through 1600 bar
- IP67 weatherproof enclosure
- CE compliant, RoHs compliant, UL 61010-1 (approval pending)
- The versatile and economical choice for a wide variety of applications

Dimensions in mm



Technical Specification

Accuracy: 0,5 % F.S. standard, 0,25 % optional

LCD Display: 5 Digit numeric top line, 5 character alphanumeric lower line, 20 segment vertical bar graph, 4 segment battery life indicator, dedicated icons for gauge timer, back light timer, tare, min and max

Character Height: Upper line 12 mm, Lower line 6 mm

View Angle: 12 o'clock

Backlight: **Optional** (Blue Backlight)

Engineering Units: psi, bar, inHg, cmHg, mmHg, kPa, MPa, kg/cm2, ftH2O and customer defined unit

Ranges: -1 to 1600 bar, gauge, vacuum and compound ranges available

Resolution (by range): See chart for detail by range.

Enclosure Material: Case & Back: Polycarbonate/ABS

Window: Polycarbonate Enclosure

Rating: IP67 Protective

Boot: Optional (Black or Orange)

Serial No.: Yes

Nominal Size: 70 mm dia., 41 mm deep, 67 mm centerline to end of ¼ NPT thread

Wetted Matl.: St. steel 17-4 PH sensor and 316L socket, laser welded

Connection: ¼ NPT and G ¼ BSP lower , BSP as standard

Battery: Two AA alkaline batteries

Battery Life: 2000 hours minimum Battery Life (dependant on battery quality)

Indicator: 4 levels

Cycle Life: 10 million cycles

Vibration: MIL-STD-202G, Method 201A (amplitude 0,8 mm,10-55 Hz, 3 axis)

Shock: MIL-STD-202G, Method 213B, Test Condition K (30 g peak, saw tooth)

Operating Temp: -20 °C to 60 °C, (-4 °F to 140 °F) ambient temperature, -20 °C to 80 °C (-4 °F 176 °F) process media temp.

Storage Temp:

Batteries installed:

-20 °C to 60 °C, (-4 °F to 140 °F)

Batteries removed:

-20 °C to 80 °C, (-4 °F to 176 °F)

Temp. Coef.: 0,22 %/10 K (-30 °C to 70 °C)
zero and span, reference temp. 21 °C

Update Rate: 1 Hz Keypad

Functions: 3 Key available with multi press functionality

Hard Keys: on/off; Power Symbol and Enter zero; Zero, tare, and up arrow menu access, backlight, down arrow

Agency Approvals: CE (heavy industrial), ASME B40.7,

Proof

Pressure:	-1...100 bar	200%
	Vac...2.000 psi	200%
	160...250 bar	150%
	3.000...5.000 psi	150%
	400...1600 bar	120%
	7.5000 ... 25.000 psi	120%

Burst

Pressure:	-1...100 bar	800%
	Vac...2.000 psi	800%
	160...250 bar	500%
	3.000...5.000 psi	500%
	400...1600 bar	300%
	7.500 ... 25.000 psi	300%

Repair Calibration and Certification

- Free uk collection service.
- All areas of instrumentation covered.
- Complete repair service available
- Calibration and Certification to National Standards
- Paper, digital and online - streamline your record keeping



Order Information

Type and size	Accuracy	Power supply type	Backlight	Protective boot	Pressure connection size	Pressure connection location	Range in bar [BR]	Range in psi [#]	Options
DG25i	(3) 0,25 % (5) 0,5 %	(1) Battery	(L) Back-light (N) No backlight	(0) None (1) Black (2) Orange	(M02) 1/8 NPT Male (M02) 1/4 NPT Male (MG2) G1/4B Male (MGA) G1/4A (F09) 9/16-18UNF-2B int. thd. (MD2) 1/4 NPTF male Consult factory for other available pressure connections.	(L) Lower (T) Top	-1 ... 0 ¹⁾ -1 ... 1 ¹⁾ -1 ... 1,6 -1 ... 4 -1 ... 6 -1 ... 16 0 ... 1 ¹⁾ 0 ... 1,6 0 ... 2,5 0 ... 4 0 ... 6 0 ... 10 0 ... 16 0 ... 25 0 ... 40 0 ... 60 0 ... 100 0 ... 160 0 ... 250 0 ... 400 0 ... 600 0 ... 1000 0 ... 1600 ¹⁾ 0,5% only	0&vac ¹⁾ 15&vac ¹⁾ 30&vac 60&vac 100&vac 300&vac 0 ... 15 ¹⁾ 0 ... 30 0 ... 60 0 ... 100 0 ... 200 0 ... 300 0 ... 500 0 ... 1000 0 ... 1500 0 ... 2000 0 ... 3000 0 ... 5000 0 ... 10.000 0 ... 15.000 0 ... 20.000 0 ... 25.000 ¹⁾ 0,5% only	(6B) Cleaned for Oxygen service (B3) Pouch with logo (C4) Individual calibration chart (NH) Wired SS tag

Order example

Pressure ranges 20,000 psi (1380 bar) or higher require F09 (9/16-18 AMINCO) or MD2 (1/4 NPTF male fitting).

Type and size	Accuracy	Power supply type	Backlight	Protective boot	Pressure connection size	Pressure connection location	Range	Engineering unit	Options
DG25i	3	1	L	1	MG2	L	16	BR	C4

